



Capulus Technologies
Private Limited



AI-ENABLED ANIMAL INTRUSION DETECTION



www.capulustech.com

About Us



At Capulus Technologies, we are committed to delivering cutting-edge technology solutions that drive innovation and efficiency. The company is based in Karnataka, India, recognized as a startup under the "StartUp India" initiative by the Government of India and "StartUp Karnataka" by the Government of Karnataka. Founded under the Companies Act 2013, Capulus Technologies has swiftly positioned itself as a leader in delivering innovative, efficient, and future-ready technology solutions for the government sector and smart cities.

Key Achievements:

Smart Policing Transformation: Capulus Technologies has played a pivotal role in modernizing police operations across Karnataka State with solutions such as the Mobile Crime and Criminal Tracking Network & Systems (MCCTNS), Field Operations Platform for Bengaluru Safe City and the Karnataka State Police Citizen Mobile App. These applications empower police officers with actionable intelligence and handy tools enabling swift investigations.

Smart City Initiatives: The company has also contributed to smart urban development through projects like the Parking Management System in Bhubaneswar Smart City and is actively working with other smart cities solutions like Smart Healthcare, Smart Waste Management, Intelligent Command and Control Centre enhancing operational efficiency and sustainability.

Why Choose Us?

Capulus Technologies AI-driven Animal Intrusion Detection System provides real-time monitoring, instant alerts, and intelligent animal classification to enhance safety in residential, industrial, and agricultural areas. With cutting-edge Edge AI cameras and automated alert mechanisms, our system ensures a proactive approach to mitigating human-animal conflicts.



Key Features

- 01 AI-Based Animal Recognition**
Uses AI-powered image processing to detect and classify animals accurately.
- 02 Animal Count Display**
Tracks and displays the number of detected animals in the area.
- 03 Camera Location Identification**
Specifies the exact camera location where the animal was detected.
- 04 Multi-Channel Alerts**
Sends instant alerts via web dashboard, mobile app, SMS, email, or on-site alarms.
- 05 Web Dashboard Monitoring**
Centralized admin panel for viewing live detections, alert history, and analytics.
- 06 Mobile Notification System**
Enables real-time alerts on mobile devices for instant action.
- 07 Time-Stamped Event Logging**
Records the exact detection time for documentation and future analysis.



The system is built to operate seamlessly in **various environments**, including **residential areas**, **agricultural lands**, **industrial zones**, and **wildlife conservation areas**. By leveraging **edge AI technology**, it processes data directly on the camera, reducing latency and ensuring faster decision-making. The ability to distinguish between different animal species helps in assessing the severity of the intrusion, allowing authorities to take appropriate actions based on the detected threat level.

Furthermore, the **historical data logging and analytics capabilities** enable long-term tracking of animal movement patterns, helping in wildlife conservation efforts and security planning. The system's scalability ensures that it can be deployed across multiple locations, providing a comprehensive solution for managing human-animal interactions efficiently. With continuous updates and AI-driven improvements, the Animal Intrusion Detection System remains a **robust, future-ready security tool** for safeguarding both human and wildlife habitats.

Benefits

01

Enhanced Safety

Reduces risks by identifying animal intrusions in real time and sending timely alerts to communities and security teams. This helps prevent accidents, property damage, and conflicts before they escalate.

03

Proactive Monitoring

Continuous surveillance and early detection of animal movements, allowing authorities to take immediate preventive actions. AI-powered recognition ensures quick identification of potential threats.

02

Accurate Tracking

Logs detection time, camera location, and animal count for precise documentation. This data helps analyze movement patterns and improve future response strategies.

04

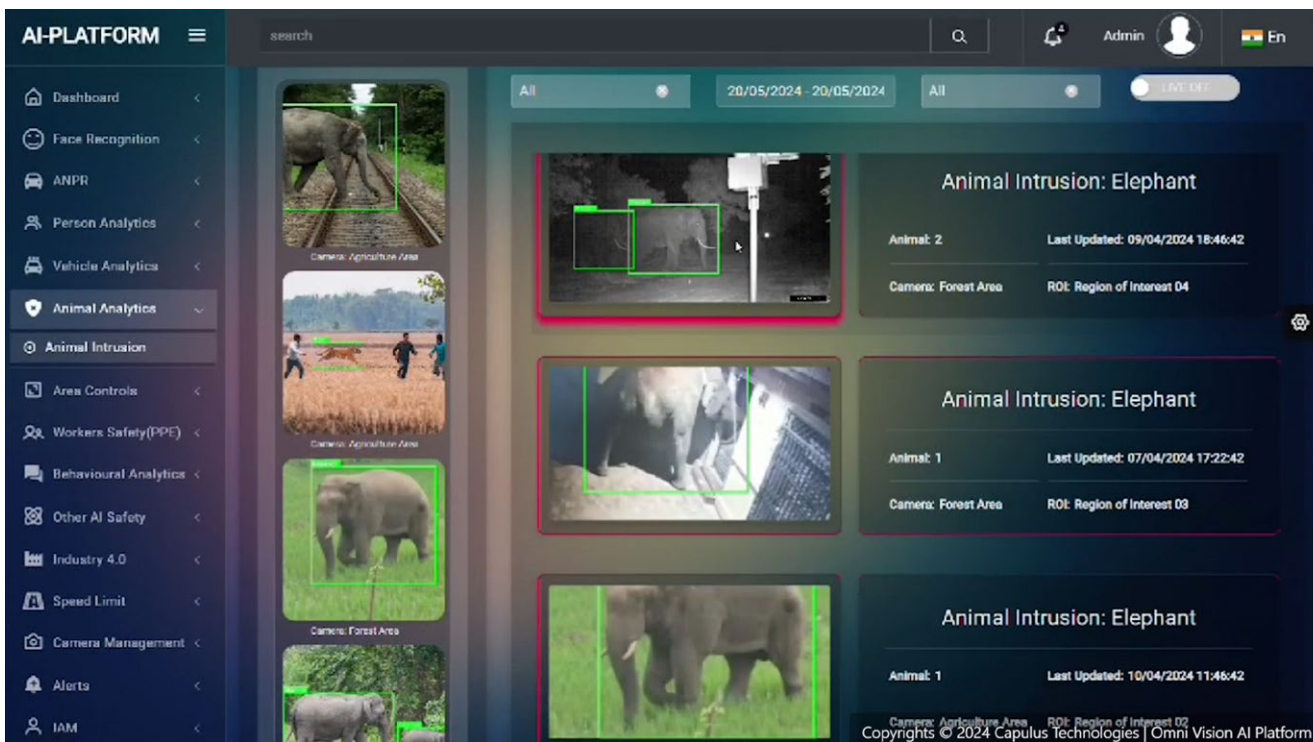
Response System

Instantly notifies security teams and communities via web dashboards, mobile apps, SMS, and email. Real-time alerts enable quick decision-making and immediate action to mitigate risks.



Ensuring Safety with Smart Detection

The Animal Intrusion Detection System provides a reliable, real-time solution to detect and respond to animal intrusions effectively. With AI-powered recognition, precise tracking, and instant alerts, it enhances safety, reduces risks, and supports proactive monitoring. By integrating web dashboard insights and mobile notifications, it ensures that authorities and communities can take immediate action when needed. Additionally, the system logs detection events with time-stamped data, enabling detailed analysis and future planning. It also offers multi-channel alerting, ensuring that notifications reach the right personnel instantly. With automated deterrent mechanisms, such as alarms and lights, it helps prevent potential conflicts and protects both humans and wildlife.





Capulus Technologies
Private Limited



AI-ENABLED ANIMAL INTRUSION DETECTION

CONTACT US

E-mail

sales@capulustech.com
contact@capulustech.com

Phone

+91 - 63616 78981
+91 - 82622 98089

Online

www.capulustech.com
[@xln/capulustech](#)