



# Vision AI-Based ATM Booth Security System

Ensuring the security of ATMs is crucial in preventing fraud, vandalism, and unauthorized access. Our advanced Vision AI-Based ATM Booth Security System enhances ATM security by leveraging intelligent monitoring, real-time alerts, and automated threat detection. With continuous surveillance, customizable alerts, and seamless scalability, the system provides round-the-clock protection for both customers and financial institutions. By reducing manual efforts and improving response times, it delivers a smarter, more efficient approach to ATM security management.

# ABOUT US

Capulus Technologies Pvt Ltd. is a pioneering Smart City and GovTech solution provider based in Karnataka, India. Recognized under the StartUp India initiative by the Government of India and StartUp Karnataka, Capulus Technologies specializes in smart urban development, intelligent command centers, and AI-driven security solutions.

Our expertise includes projects such as the Parking Management System in Bhubaneswar Smart City, Smart Healthcare, Smart Waste Management, and much more. Our focus is to provide efficient, future-ready technology solutions that enhance operational efficiency and security.



## • Why Choose Capulus Technologies?

**Innovative Solutions:** Capulus Technologies stands out with its cutting-edge expertise in Artificial Intelligence (AI), Machine Learning, Big Data Analytics, Integrations, and Business Intelligence (BI), providing comprehensive technology-driven solutions. Our AI and Machine Learning capabilities empower predictive analytics and decision-making, while Big Data Analytics delivers actionable insights from vast data sets. Through seamless system Integrations and advanced BI tools, we create scalable, efficient, and intelligent platforms.

**Proven Track Record:** Successful implementation of diverse projects across smart cities and government sectors.



# KEY FEATURES



Vision AI-Based ATM Booth Security provides continuous surveillance, automatic threat detection, and real-time alerts for enhanced protection. It features AI-driven mask and helmet recognition, customizable notifications, and 24/7 monitoring to prevent unauthorized activities. Designed for scalability, it seamlessly integrates with existing security systems for centralized and efficient management.

## 01 AI-Powered Monitoring

Continuous video surveillance with automatic recording, AI-driven mask and helmet detection, intelligent automation, and threat identification. The system minimizes intervention, enhances accuracy, and ensures a safer environment.

## 02 Customizable Alerts

Tailored notifications with adjustable sensitivity to minimize false alarms, detect threats, and enable quick response. Security teams configure alerts based on risk levels for timely intervention.

## 03 Real-Time Notifications

Immediate alerts via multiple channels for faster response, enhanced situational awareness, and detailed security assessments. Notifications are sent via SMS, email, and mobile apps, enabling swift action.

## 04 Data Logging & Reporting

Maintains comprehensive logs, generates reports, provides actionable insights, and helps organizations optimize security strategies based on past incidents. The system ensures compliance with security regulations and facilitates audits.

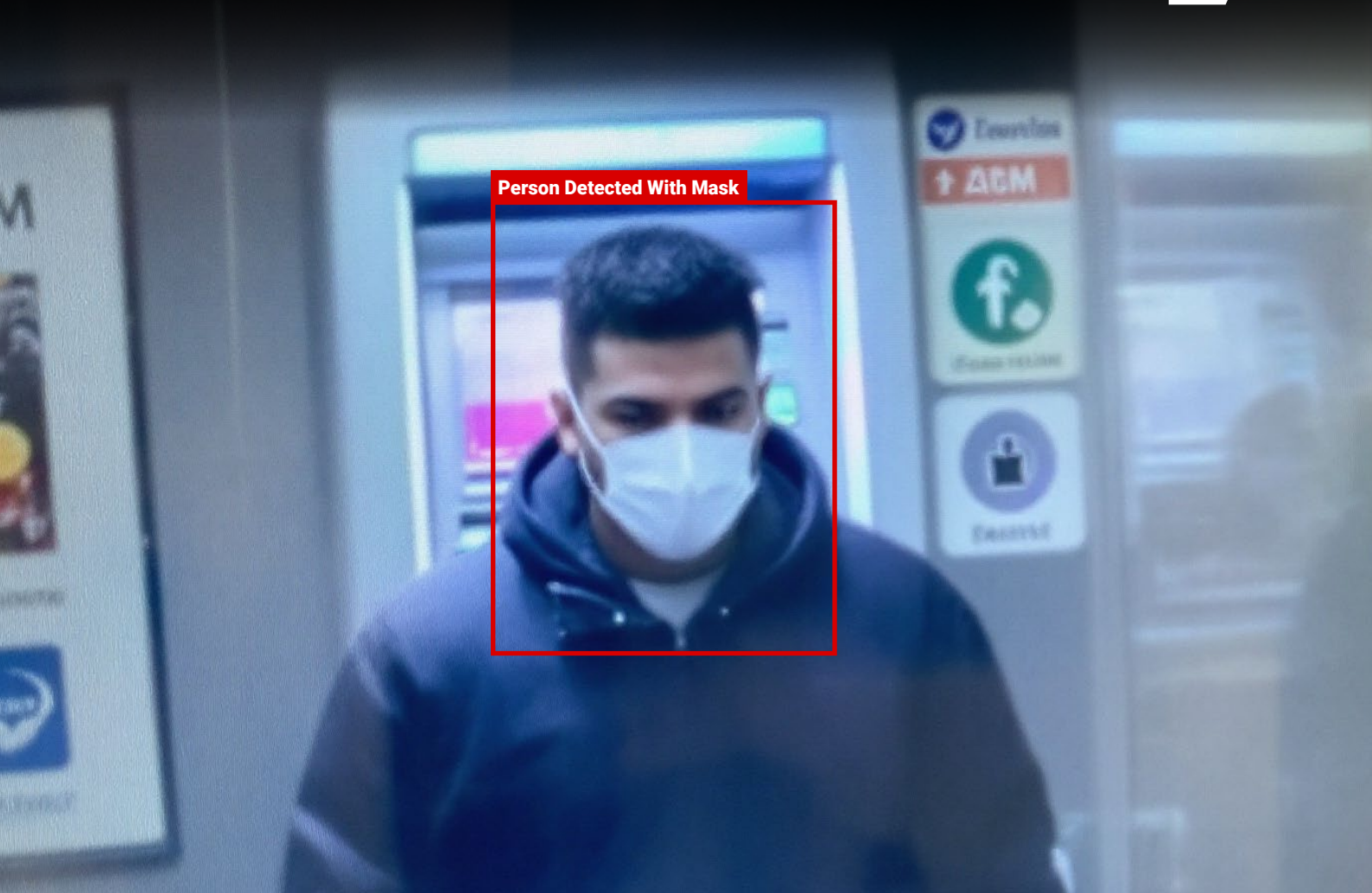
## 05 24/7 Monitoring

Uninterrupted surveillance to detect threats, prevent unauthorized activities, and ensure constant protection for ATM users at all times. The system operates without downtime, deterring potential criminals.

## 06 Scalable Solution

Easily deployable across multiple ATMs with centralized monitoring, seamless integration, and flexible expansion for improved security management. The system supports multi-location surveillance and allows remote access.





## BENEFITS



### Enhance ATM Security

Prevent unauthorized access and reduce security threats by utilizing AI-driven monitoring, real-time alerts, and automated threat detection for proactive security measures.



### Ensure Customer Safety

Provide a safer environment for ATM users with continuous surveillance, rapid incident detection, and immediate response to suspicious activities, ensuring peace of mind.



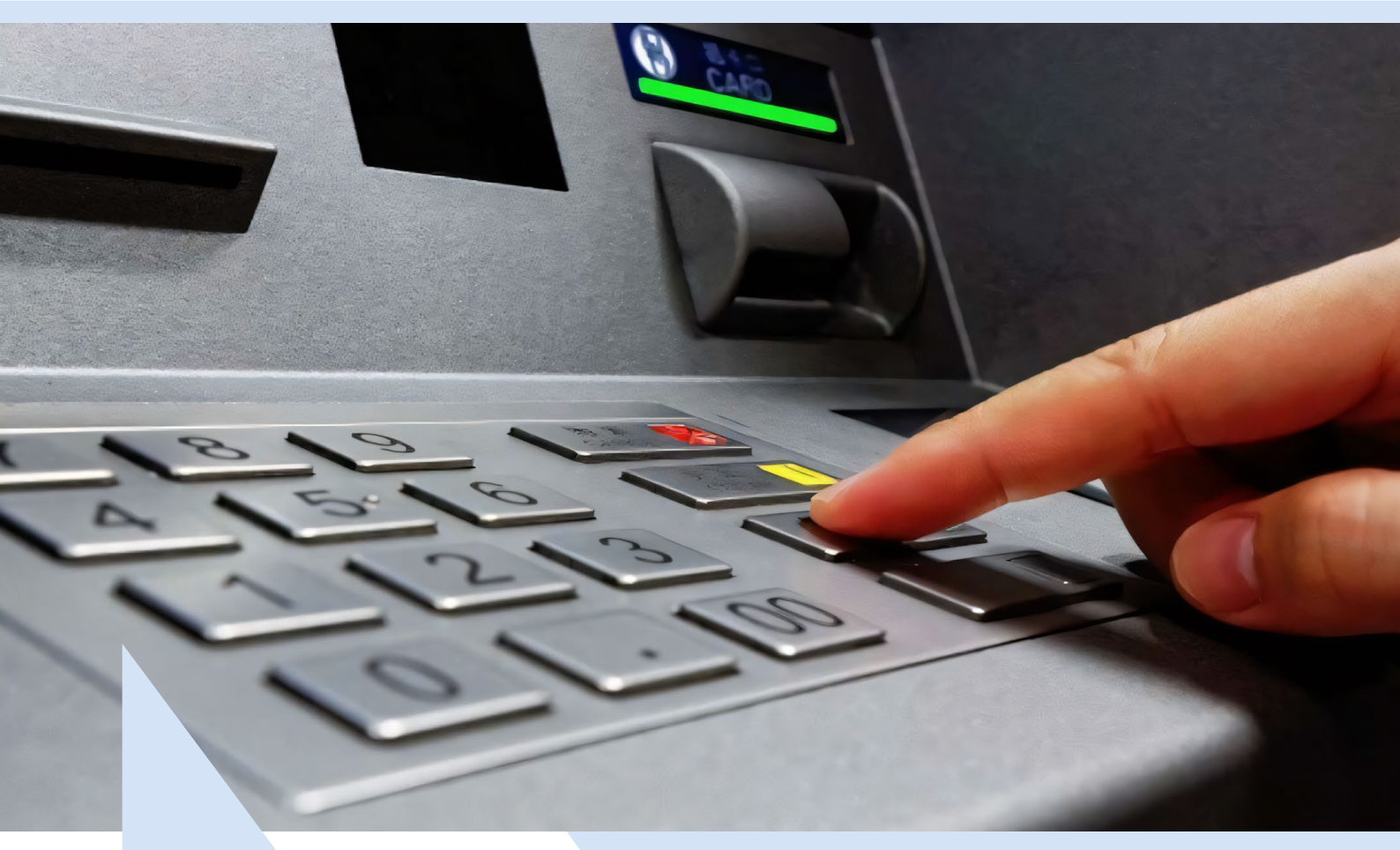
### Reduce Manual Effort

Minimize the need for constant human surveillance by automating monitoring, reducing operational costs, enhancing efficiency, and allowing security teams to focus on critical threats.



### Improve Incident Response Time

Instant alerts ensure quicker security interventions by notifying personnel in real time, enabling faster action, preventing escalation, and reducing potential losses effectively.



## Secure Your ATM Booth Today!

With Vision AI-Based ATM Booth Security System, take a proactive approach in ensuring safety, preventing fraud, and reinforcing trust in ATM transactions.

---

E-mail  
[sales@capulustech.com](mailto:sales@capulustech.com)  
[contact@capulustech.com](mailto:contact@capulustech.com)

Phone  
**+91 - 63616 78981**  
**+91 - 82622 98089**

Online  
[www.capulustech.com](http://www.capulustech.com)  
[@x/](#)capulustech